



**FARMING**  
connect  
cyswllt  
**FFERMIO**

08456 000 813

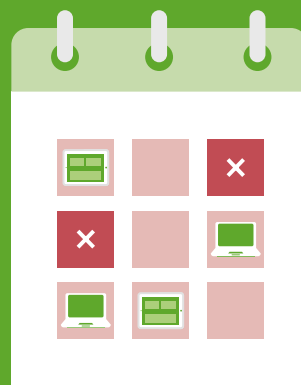
# Beth sydd ar y gweill? *What's on?*

Rhifyn Hydref 2020

Sicrhau eich bod yn cadw mewn cysylltiad yn ystod y cyfnod digynsail hwn

October 2020 Edition

Making sure you stay connected during these unprecedented times



Cronfa Amaethyddol Ewrop ar  
cyfer Datblygu Gwledig  
Ewrop yn Buddsoddi mewn Ardaloedd Gwledig  
European Agricultural Fund for  
Rural Development  
Europe Investing in Rural Areas



Llywodraeth Cymru  
Welsh Government

[www.llyw.cymru/cyswlltffermio](http://www.llyw.cymru/cyswlltffermio)  
[www.gov.wales/farmingconnect](http://www.gov.wales/farmingconnect)





PROSIECT  
PORFA CYMRU  
WELSH PASTURE  
PROJECT

### Olrhain potensial porfa ar ffermydd Cymru mewn prosiect rhannu data

Bydd perfformiad porfa ar nifer o ffermydd hyd a lled Cymru yn cael ei fesur a'i fonitro unwaith yr wythnos wrth i fenter newydd Cyswllt Ffermio gael ei lansio i gyfrannu at y dasg o reoli porfa ar ffermydd Cymru.

Mae'r 17 fferm laeth a'r 26 fferm biff a defaid a ddewiswyd i roi cynrychiolaeth gytbwys o fathau o dir a systemau, wedi'u lleoli ledled Cymru er mwyn rhoi darlun cywir o botensial twf glaswellt ym mhob rhanbarth. Dewiswyd pob fferm o Raglen Rhagori ar Bori Cyswllt Ffermio.

Bydd y ffermydd laeth yn mesur ac yn monitro twf eu glaswellt bob wythnos a'r ffermydd biff a defaid bob pythefnos.

Un o ddibenion Prosiect Porfa Cymru yw helpu i ddeall effaith y tywydd a rheoli glaswellt ar gynhyrchu porfa. Bydd y fenter hefyd yn fodd i ddatblygu adnoddau gwneud penderfyniadau ar gyfer rheoli porfa.

Bydd y ffigwr wythnosol ar gyfer twf glaswellt gwahanol ardaloedd ledled Cymru yn cael ei rannu trwy sianeli cyfryngau cymdeithasol Cyswllt Ffermio bob dydd lau. Gall aelodau cofrestredig dderbyn y data diweddaraf, gwybodaeth a dadansoddiad o'r prosiect yn ein e-gylchlythyr misol.

### Pasture potential of Welsh farms to be tracked in data sharing project

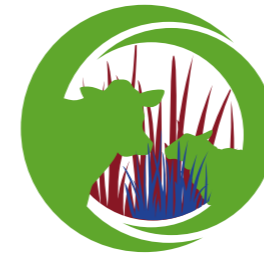
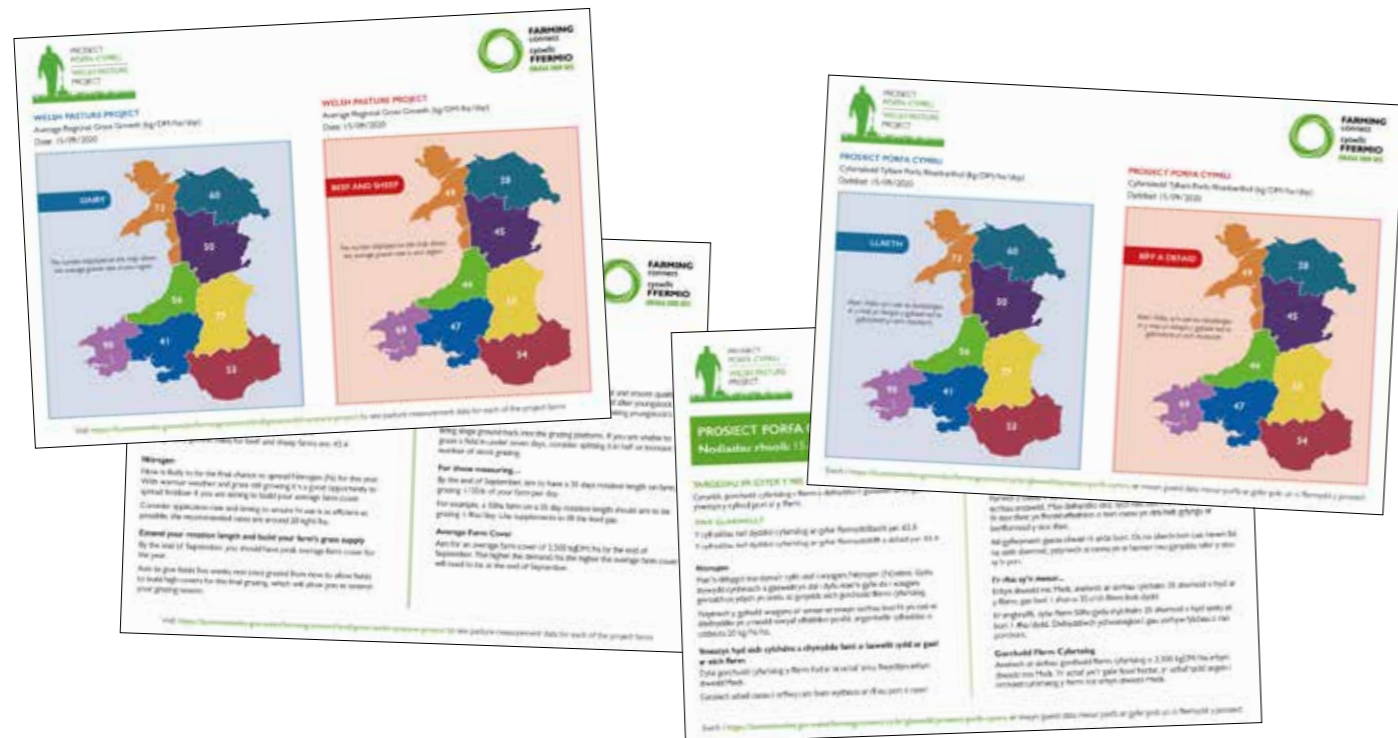
Pasture performance on farms the length and breadth of Wales will be measured and monitored once a week as a new Farming Connect initiative launches to inform grazing management on Welsh farms.

The 17 dairy farms and 26 beef and sheep farms, selected to give an even representation of land and system types, are located across Wales to form an accurate picture of the grass growing potential in all regions. All farms have been selected from Farming Connect's Prosper from Pasture programme.

The dairy farms will measure and monitor their grass growth weekly and the beef and sheep farms fortnightly.

One of the purposes of the Welsh Pasture Project is to help understand the impact of weather and grass management on pasture production. The initiative will also allow decision making resources for grazing management to be developed.

The average weekly grass growth figure for different regions across Wales will be shared via Farming Connect's social media channels every Thursday. Registered Farming Connect members will receive updates in our monthly e-newsletter which will include up to date data, information and analysis of the project.



RHAGORI AR BORI  
PROSPER FROM PASTURE

## Gwella dyfodol systemau da byw sy'n seiliedig ar borfa

Bydd y ffenest ymgeisio ar agor rhwng **26 Hydref 2020 - 26 Tachwedd 2020**.  
Bydd mwy o wybodaeth ynglŷn â sut i fod yn rhan o Rhagori ar Bori ar ein gwefan yn fuan.

[www.llyw.cymru/cyswlltffermio](http://www.llyw.cymru/cyswlltffermio)

## Improving the future of pasture-based livestock systems

The application window will be open between **26 October 2020 - 26 November 2020**.  
Further information on how to be part of Prosper from Pasture will be on our website soon.

[www.gov.wales/farmingconnect](http://www.gov.wales/farmingconnect)



### Ydych chi wedi methu gweminar Cyswllt Ffermio neu ddigwyddiad Yn Fyw o'r Fferm Arddangos, neu ein fidoes Canllaw i Reolaeth Glaswellt diweddar? Ydych chi eisiau cyfle i ail-wylïo?

Mae pob un o'n gweminarau, podlediadau a'n clipiau fideo ar gael ar ein sianel YouTube er mwyn eich galluogi i'w gwylïo ar adeg sy'n gyfleus i chi.

Chwiliwch am 'Cyswllt Ffermio | Farming Connect' ar YouTube

### Rydym ni wedi trafod ystod eang o bynciau ac wedi siarad gydag arbenigwyr o'r diwydiant!

- Glaswellt a rheoli'r borfa
- Priddoedd a chynllunio rheoli maetholion
- Arallgyfeirio
- Merched mewn amaeth
- Ffermio a'r amgylchedd
- Iechyd a diogelwch ar y fferm



### Did you miss a Farming Connect webinar a Demo Farm Live event or our recent Guide to Grazing Management videos and would like to catch up?

All of our webinars, podcasts and videos are available for you on our YouTube channel for you to watch at a time that suits you.

Search for 'Cyswllt Ffermio | Farming Connect' on YouTube

### We have covered a whole range of topics and feature some industry experts!

- Grass and grazing management
- Soil and nutrient management planning
- Diversification
- Women in agriculture
- Farming and the environment
- Health and safety on farm

RHITHIOL >>>>>> VIRTUAL >>>>>>

# ARLOESI AC ARALLGYFERIO

19.10.2020 - 23.10.2020

Rydym yn eich gwahodd i...

ychwanegu gwerth i'ch busnes, buddsoddi yn eich dyfodol, bod yn rhan o'ch stori lwyddiannus

- Trafod gyda dyfeiswyr, gwneuthurwyr a dosbarthwyr sydd ar flaen y gad o ran yr arloesedd a'r dechnoleg ddiweddaraf ar gyfer busnesau fferm a choedwigaeth
- Dysgu sut mae'r mentrau arallgyfeirio mwyaf llwyddiannus yn ffynnu mewn marchnad gystadleuol
  - Gwireddu eich syniadau drwy fanteisio ar arweiniad, cefnogaeth, hyfforddiant a mentora Cyswllt Ffermio

Bydd yr holl weithgareddau yn cael eu cynnal ar-lein. Er mwyn ymuno, neu am ragor o wybodaeth, ewch i'n gwefan.  
[www.llyw.cymru/cyswlltffermio](http://www.llyw.cymru/cyswlltffermio)

# INNOVATION AND DIVERSIFICATION

19.10.2020 - 23.10.2020

You are invited to...

add value to your business, invest in your future, be part of the success story

- Talk with inventors, manufacturers and distributors at the forefront of today's cutting-edge innovation and new technologies for farm and forestry businesses
- Learn how today's most successful diversification enterprises prosper in a competitive market
  - Transform your ideas into reality by tapping into Farming Connect guidance, support, training and mentoring

All activities will be held online. To join or for more information, please visit our website.  
[www.gov.wales/farmingconnect](http://www.gov.wales/farmingconnect)



Innovation and Diversification Wales @InnDivCymru

Arloesi ac Arallgyfeirio - Innovation and Diversification

## Cymorthfeydd Covid-19

Cymorthfeydd Cyswllt Ffermio ar gael nawr gyda lluo o arbenigwyr i gefnogi y gymuned ffermio yn ystod Covid-19.

Bydd y cymorthfeydd yn para hyd at awr ac yn cael eu hariannu yn llawn trwy Cyswllt Ffermio. Anelir i drefnu hyn o fewn ychydig oriau o'ch ymholiad cyntaf.

MAE'R PYNCIAU'YN CYNNWYS:

- Cyfreithiol
- Cyfrifydd
- Busnes
- Maeth y fuches laeth/biff a defaid
- Tir glas - Trafod rheoli porfa
- Tir glas - Trafod dadansoddi pridd
- Coetir
- Marchnata ac Arallgyfeirio
- Rheoli Staff
- Cynllunio
- Isadeiledd
- TGCh

## Covid-19 Surgeries

Farming Connect surgeries available now with various specialists to support the farming and forestry community during Covid-19.

The one hour surgeries are fully funded through Farming Connect. We aim to arrange this within a few hours of your initial enquiry.

TOPICS INCLUDE:

- Legal
- Accountant
- Business
- Dairy/beef and sheep nutrition
- Grassland - Grass management
- Grassland - Soil analysis
- Woodland
- Marketing and Diversification
- Staff Management
- Planning
- Infrastructure
- ICT

## Ymgeisiwch nawr ar gyfer cyllid sgiliau Cyswllt Ffermio i...

...ddatblygu eich sgiliau, datblygu eich busnes ...cynllunio ar gyfer y dyfodol

Farming Connect skills funding. Apply now to...

...develop your skills, develop your business ...plan ahead now

Mae'r cyfnod ymgeisio am gyllid sgiliau ar agor rhwng 7 Medi - 30 Hydref 2020  
The skills funding application window is open between 7 September - 30 October 2020

- Mae cymorthdal o hyd at **80%** ar gael ar gyfer cyrsiau hyfforddiant i fusnesau ac unigolion sydd wedi cofrestru
  - Mae mwy na **80 o gyrsiau** ar gael, dan gategoriâu Busnes, Tir a Da Byw
- Rhwydwaith o **ddarparwyr hyfforddiant cymeradwy**, wedi'u lleoli ledled Cymru

- All training courses subsidised by up to **80%** for registered businesses and individuals
- More than **80 courses** available, categorised under Business, Land and Livestock
- Network of **approved training providers**, located throughout Wales



Am gefnogaeth ar sut i wneud cais, ewch i wefan Cyswllt Ffermio neu, cysylltwch â'ch swyddog datblygu lleol neu'ch darparwr hyfforddiant cyn gynted â phosibl yn ystod y cyfnod ymgeisio.

For support on how to apply, please visit the Farming Connect website or, contact your local development officer or training provider as early as possible in the application window.

08456 000 813

[www.llyw.cymru/cyswlltffermio](http://www.llyw.cymru/cyswlltffermio) / [www.gov.wales/farmingconnect](http://www.gov.wales/farmingconnect)

## GWEMINARAU WYTHNOSOL / WEEKLY WEBINARS

Ymunwch â ni ynghyd â llu o arbenigwyr o'r diwydiant yn un o'n gweminarau poblogaidd. Er mwyn ymuno â gweminar, e-bostiwch [delyth.evans@menterabusnes.co.uk](mailto:delyth.evans@menterabusnes.co.uk) neu ewch i'r dudalen ddigwyddiadau ar ein gwefan. Mae pob gweminar yn defnyddio Zoom a bydd cyfarwyddiadau llawn ynglŷn â sut i ymuno'n cael eu rhannu gyda chi cyn y digwyddiad.

Join us and a host of industry experts for one of our popular webinars. To join a webinar, please e-mail [delyth.evans@menterabusnes.co.uk](mailto:delyth.evans@menterabusnes.co.uk) or visit the events page on our website. All webinars use the Zoom platform and full joining instructions will be shared with you prior to the event.



Pryd/When	Pwnc/Topic	Siaradwr/Speaker
12/10/20 19:00	Beth all offer a thechnegau Ffermio Da Byw yn Fanwl Gywir (PLF) ei gynnis i ffermwyr da byw? <i>What can Precision Livestock Farming (PLF) tools and techniques offer livestock farmers?</i>	Manod Williams IBERS, Aberystwyth
15/10/20 19:30	Cynllunio iechyd y ddiadell a lleihau'r defnydd o wrthfotigau <i>Flock health planning and reducing the use of antibiotics</i>	Joseph Angell, Milfeddygon y Wern/Wern Vets a/and Dr Gwen Rees, Bristol Veterinary School
19/10/20 19:30	Rheoli eich tail dofednod <i>Managing your poultry manure</i>	Graham Leaver, Egis Consultancy
20/10/20 11:00	Tai coed: Ein profiad o arallgyfeirio <i>Treehouses: Our diversification journey</i>	Laura Lewis, Squirrel's Nest, Llandrindod/Llandrindod Wells
20/10/20 15:00	A yw arallgyfeirio i'r farchnad briodasau yn opsiwn ar gyfer eich busnes? <i>Is diversifying into the wedding market an option for your business?</i>	Kelly Chandler Consulting
20/10/20 20:00	Sut lwyddodd un busnes arallgyfeirio i ddod yn enwog ar draws y byd! <i>How one diversification business became world famous!</i>	Sean Taylor, Zip World
21/10/20 10:30	Arloesi ym maes Garddwriaeth (Tatws/moron a llysiau coesyngog) <i>Horticulture Innovation (Potatoes/carrots and stem vegetables)</i>	Grace Choto, AHDB Horticulture a/and Sarah Gould, Tyfu Cymru
21/10/20 14:00	Rhyngwyd y Pethau ar ffermydd Cymru: Gwneud y broses o reoli ffermydd yn haws, yn well ac yn fwy proffidiol. <i>Internet of Things on Welsh farms: Making farm management easier, better and more profitable.</i>	Geraint Hughes
21/10/20 20:00	Beth yw rôl technoleg Rhyngwyd y Pethau mewn Amaethyddiaeth? <i>What role does Internet of Things technology have in agriculture?</i>	Peter Williams, Llywodraeth Cymru/Welsh Government a/ and Stephen Christie, Agxio
21/10/20 19:30	Rheoli eich tail dofednod <i>Managing your poultry manure</i>	Graham Leaver, Egis Consultancy
22/10/20 12:30	Mapio'r Pridd yn Fanwl Gywir ar fferm Pantyderi <i>Precision Soil Mapping at Pantyderi Farm</i>	Ben Burgess, Agri Agronomist a/and Rhiza Technical
22/10/20 15:30	Gwerthu ar-lein <i>Selling Online</i>	Eddy Webb, Insynch
22/10/20 20:00	Crynodeb o'r adroddiad ffermio arloesol <i>Summary of the innovation farming report</i>	Jonathan Birnie, agri-food consultant
26/10/20 15:30	Google Analytics <i>Google Analytics</i>	Eddy Webb, Insynch
27/10/20 20:00	Rheoli coetir ar gyfer hybu bio-amrywiaeth a bywyd gwylt <i>Managing woodland to promote biodiversity and wildlife</i>	Phil Morgan, Sustainable Forest Management a/and SelectFor
29/10/20 12:30	Rheoli ac atal mastitis wrth gadw gwartheg dan do <i>Management and prevention of mastitis over the housing period</i>	James Breen, Prifysgol Nottingham a QMMS / University of Nottingham and QMMS
29/10/20 20:00	Ansawdd/Rheolaeth Pridd - Lleihau mewnbynau nitrogen <i>Soil Quality/Management - Reducing nitrogen input</i>	Chris Duller, Independent grassland specialist
02/11/20 15:30	Marchnata drwy e-bost <i>Email Marketing</i>	Eddy Webb, Insynch
05/11/20 19:30	Llunio dognau cost effeithiol ar gyfer gwartheg biff <i>Formulating cost effective rations for beef cattle</i>	Hefin Richards, Rumenation Nutrition Consultancy
09/11/20 18:30	Adnodd Cofnodion Fferm WLBP <i>WLBP Farm Records Facility</i>	Llyr Lewis, WLBP

 = Digwyddiad Arloesi ac Arallgyfeirio - Innovation and Diversification Event



## E-DDYSGU

Ydych chi am reoli eich tir yn fwy effeithlon? Cwblhewch un neu fwy o'r cyrsiau e-ddysgu canlynol o gysur eich cartref eich hun, ar adeg sy'n gyfleus i chi:

- Newid yn yr Hinsawdd a Rheoli Tir
- Rheolaeth Maetholion Fferm
- Compostio ar y Fferm
- Diogelwch Plaladdwyr
- Lleihau Llygredd Amaethyddol
- Rheoli Slyri

I gael rhagor o wybodaeth am gyrsiau a sut i gael mynediad at e-ddysgu, ewch i wefan Cyswllt Ffermio

[llyw.cymru/cyswlltffermiosgiliauhyfforddiant](http://llyw.cymru/cyswlltffermiosgiliauhyfforddiant)

## E-LEARNING

Are you looking to manage your land more efficiently? Complete one or more of the following e-learning courses from the comfort of your own home, at a time convenient to you:

- Climate Change and Land Management
- Farm Nutrient Management
- Farmyard Composting
- Pesticide Safety
- Reducing Agri-pollution
- Slurry Management

For further course information and how to access e-learning, visit the Farming Connect website

[gov.wales/farmingconnectskillsandtraining](http://gov.wales/farmingconnectskillsandtraining)

# Ailddechrau'r hyfforddiant cyfrifiaduron wyneb i wyneb i ddechreuwyr

---

## HYFFORDDIANT CYFRIFIADURON AR GYFER DECHREUWYR

- Cwrs hyfforddiant chwe wythnos o hyd, wedi'i ddarparu ar ffurf sesiwn ddwy awr wythnosol
- Chwe modiwl cyfrifiadurol wedi'u cynllunio i roi'r sgiliau TG sydd eu hangen arnoch chi yn eich busnes
  - Dosbarthiadau cyfeillgar sy'n addas i bawb, wedi'u darparu ledled Cymru gan diwtoriaid colegau amaethyddol lleol ar lefel a chyflymder sy'n addas i bawb

Yn ystod y cyfyngiadau Covid-19, fe wnaethom ni addasu'r cwrs Cyfrifiaduron i Ddechreuwyr i fod yn gwrs wedi'i ariannu'n llawn i'w gwblhau gartref, lle gallwch weithio drwy lyfryn gwaith o gysur eich cartref, ar gyflymder ac amser sy'n addas i chi. Am ragor o fanylion ac i ofyn am gopi o'r llyfryn yn ymwneud â'r hyfforddiant hwn, cysylltwch â Chanolfan Wasanaeth Cyswllt Ffermio ar **08456 000 813**, ffoniwch eich swyddog datblygu lleol neu ewch i [www.llyw.cymru/cyswlltffermio](http://www.llyw.cymru/cyswlltffermio)

### *Gallwch ddysgu sut mae:*

- ✓ creu, anfon a derbyn negeseuon e-bost
- ✓ creu, arbed ac argraffu dogfennau a thaenlenni
- ✓ pori'r we a defnyddio'r rhyngrwyd yn ddiogel
- ✓ cysylltu eich busnes drwy'r cyfryngau cymdeithasol gan gynnwys Facebook, YouTube ac Instagram
- ✓ gweld a rheoli eich manylion a'ch cyrif ar wefan Taliadau Gwledig Cymru



## Resumption of face-to-face computer courses for beginners

---

### COMPUTER TRAINING FOR BEGINNERS

- A six week training course, provided via a two-hour session per week
- Six computer-based modules all designed to give you IT skills you can use within your business
  - Friendly, accessible classes, delivered throughout Wales by local land-based college tutors at a level and pace to suit everyone

During the Covid-19 restrictions, we transformed Computers for Beginners into a fully funded home course, where you can work through a learning booklet in the comfort of your home, at a pace and time to suit you. For further information and to send for a booklet on this computer training call the Farming Connect Service Centre on **08456 000 813**, or contact your local development officer or visit [gov.wales/farmingconnectskillsandtraining](http://gov.wales/farmingconnectskillsandtraining)

### *You can learn how to:*

- ✓ compose, send and receive emails
- ✓ create, save and print documents and spreadsheets
- ✓ browse the web and use the internet safely
- ✓ connect your business through social media platforms including Facebook, YouTube and Instagram
- ✓ view and manage your Rural Payment Wales holding details and online account