



Resilient and Productive

Accredited Training



85

Individuals Supported

74

Businesses Supported

707

Hours of Training

Courses Included	Businesses Supported
Book keeping	17
Social media marketing	10
Digital Marketing Planning & Using Digital Tools	6
Dry stone Walling	3
Introduction to agricultural business planning	3

Feedback: "Attending this course has helped me gain the knowledge to carry out carbon foot printing for the business and implement more sustainable practices". (Environmental sustainability skills for Managers)

E-learning



184

Individuals Supported

85

Businesses Supported

Modules Included	Individuals Supported
Mandatory Unit: Fundamentals to a Successful Business	32
An Introduction to Sustainable Farming	8
Horticulture: Due Diligence for Small Growers	7
Food Safety for Growers of Fresh Produce	7

New modules available on BOSS included:



- Renewable Energy: Wind Energy Generation
- Efficient Water Use (Including Harvesting and Storage)
- Animal welfare
- Grow Your Own Protein

Horticulture Training



9 Horticulture events supported
64 individuals from 56 different businesses

Horticultural Business support



91 Horticulture business support sessions have taken place supporting 80 unique individuals from 68 businesses

Feedback: "We now have a better idea of a flower farmers calendar and are planning on following a horticultural sowing plan. We are making better use of our poly tunnel to extend our season and improve our profits and productivity."

Welsh Sheep Genetics Programme



11 knowledge transfer events were organised for the WSGP farmers during this period, being a mixture of online webinars, workshops, and on-farm meetings.

3 on-farm meetings were held across Wales to discuss Sustainable Worm Management. Following these events, 28 farms were recruited to take part in the 'breeding for resistance to worms' project.

A webinar focusing on 'Optimal Lamb Performance' was held during July with the focus on lamb health and ensuring lambs perform to their maximum potential to reduce the days on-farm.

20 individuals from the WSGP attended the study tour to visit 3 farms in England, finishing with the Friday session at the Sheep Breeders Round Table.

Mentoring



453 hours of mentoring have taken place



- Benchmarking & business planning **156**
- Horticulture start-up and development **44**
- Diversification (including into horticulture) & adding value **43**
- Joint ventures, succession planning & new entrants **26**
- Converting to organic/regenerative farming **17**
- Lowering external inputs to maximise profits and benefit the environment **9**
- Biosecurity (livestock and arable) **1**

Strategic Awareness Events



24 Events

385

Attendees

Topics included: > EID > Grow your own protein > Diversification

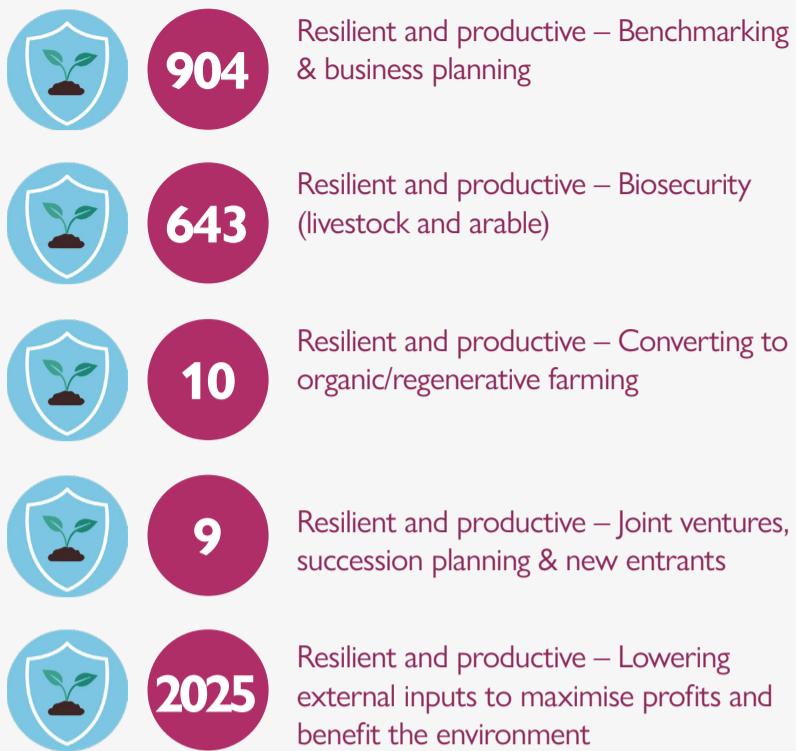
Podcast



Episode 107: Lameness in Dairy Cattle: Episode 2

Advisory Service

Instances of advice delivered against SLM Outcomes include:



Feedback: "The Consultant was excellent, great delivery. Looked at carbon / mineral content of the soil which was extremely useful and reinforced what we're currently doing in terms of applying nutrients is working well."

Discussion Groups



	Number of meetings
Benchmarking & business planning	62
Lowering external inputs to maximise profits and benefit the environment	82
Converting to organic/regenerative farming	14
Diversification (including into horticulture) & adding value	10
Joint ventures, succession planning & new entrants	8
Biosecurity (livestock and arable)	40

Animal Health and Welfare Workshops



Clinics

134 Clinics completed

Topics included:
Soils | Grassland

Surgeries

264 Surgeries completed

Topics included:
Succession | Business | Planning

Masterclasses

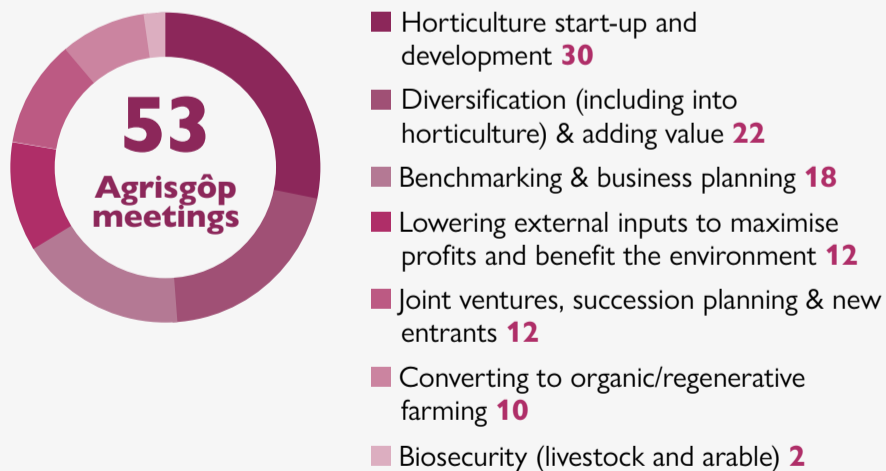
Seeding Change: A guide to Regenerative agriculture

As a result of attending the masterclass 91% of attendees will make.

- › Reduced external input
- › Start new enterprise
- › Improve animal health and welfare
- › Increased productivity

Agrisgôp

53 Agrisgôp meetings have taken place



Our Farms Network

Our Farms – Farm Walks: A showcase of agricultural Excellence

– during the events the following projects were highlighted and discussed with attendees:

- › [Evaluating a bi-crop of peas and beans to replace bought in protein for pregnant ewes and growing and finishing beef cattle](#)
- › [New Calf Housing System at Graianfryn to improve animal welfare and bio-security](#)

