



Reduce, Reuse, and Recycle inputs, nutrients and waste

Accredited Training



94

Individuals Supported

85

Businesses Supported

1378

Hours of Training

Courses undertaken included:	Individuals supported
Safe Use of Vet & Med	27
Level 2 Award in the Safe Use of Pesticides (PA1) & Safe Application of Pesticides Using Vehicle Mounted Boom Sprayer Equipment (PA2)	12

Horticulture Training – Land



7 Horticulture events supported 48 individuals from 38 different businesses

Events included:

Peat free propagation, Soil Health Workshop and Growing field scale organic

Horticulture Business Support – Land

34

Training sessions

41

Individuals

31

Businesses

Feedback: "Helpful guidance for types of watering systems, heating and pest control measures to budget for and especially environmentally regarding the latter as we have had some problems with slugs and wanted to know all the possible organic ways to limit."

E-learning



237

Individuals Supported

155

Businesses Supported

Modules completed included:	Individuals Supported
Cattle Lameness	91
Pesticide Safety	33
An Introduction to Sustainable Farming	10
Animal welfare	7
Due Diligence for Small Growers	7

New modules produced:



Animal welfare
Building Soil Carbon
Soil Sampling And Analysis
Soil Health

Carbon Reporting for Beginners
Animal Health

Advisory Service



Instances of advice delivered against SLM Outcomes include:



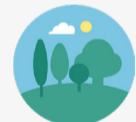
647

Antibiotic resistance



1169

Building fertility (slurry/muck, crop rotation, green manures)



953

Grassland management (including multi-species swards and mixed grazing)



605

Integrated pest management



1147

Lowering ammonia emissions (air quality)



1176

Nutrient management planning & soil testing



647

Sustainable use of anthelmintics

Feedback: "The consultant did a great job of explaining the ways of treating lame cows and necessary action we need to take."

Mentoring



529 hours of mentoring have taken place



- Nutrient management planning & soil testing **163**
- Grassland management (including multi-species swards and mixed grazing) **8**
- Building fertility (slurry/muck, crop rotation, green manures) **1**
- Sustainable use of anthelmintics **1**
- Integrated pest management **1**

Surgeries



28

Surgeries completed

All above surgeries were on **Infrastructure**

Clinics



48

Clinics completed

Topics included:
Grassland | Control of Agriculture Pollution

Discussion Groups



Reduce, reuse and recycle inputs, nutrients and waste
96 Discussion Groups with 608 attendees, 221 hours of CPD

Nutrient management planning and soil testing
36 Discussion Groups with 222 attendees, 82.5 hours of CPD

Building fertility
36 Discussion Groups with 221 attendees, 84.5 hours of CPD

Antibiotic resistance
42 Discussion Groups with 269 attendees, 98.7 hours of CPD

Sustainable use of anthelmintics
44 Discussion Groups with 279 attendees, 102 hours of CPD

Integrated pest management
6 Discussion Groups with 38 attendees, 15 hours of CPD

Grassland management
52 Discussion Groups with 326 attendees, 118.5 hours of CPD

Lowering ammonia emissions
13 Discussion Groups with 93 attendees, 33.5 hours of CPD

Our Farms Network



Farming Connect Our Farms – Farm Walks: A Showcase of Agricultural Excellence – Over 1000 farmers attended 15 farm walks across Wales with an opportunity to learn more about the on-farm projects across the network.

99%

of attendees noted that they had learned something new from attending one of the farm walks

85%

of attendees noted that they intended to change something within their business following attending one of the farm walks

Welsh Pasture Project 2024

On average, dairy farms across Wales grew 17.6tDM/ha, 4tonnes more than previous year. However, beef and/or sheep farms grew 7.7tDM/ha, similar to the 2023 season.

Strategic Awareness Events



5 Events

83

Attendees

Topics included: Grow your own protein, EID Technology

Agrisgôp



14 Agrisgôp meetings have taken place



- Nutrient management planning & soil testing **9**
- Grassland management (including multi-species swards and mixed grazing) **6**
- Building fertility (slurry/muck, crop rotation, green manures) **3**
- Lowering ammonia emissions (air quality) **2**
- Sustainable use of anthelmintics **1**
- Integrated pest management **1**

Groups focused on:

1. The Biological Systems in Dairy, Beef and Sheep groups went on a study visit to both Sam Carey's farm, and also Caebardd Farm. Group discussed: Grass off milk, Biochar and its carbon capture potential, and business sustainability.
2. The herb group had a tour of the 4 acres of herb gardens. The group benefited from seeing a large-scale example of herb growing and were able to ask technical questions in a comfortable environment.

Animal Health and Welfare Workshops



655 individuals from 422 businesses were supported



Improving animal welfare included **41 workshops delivering 1965 hours of training**

Workshop topics included:	Individuals Supported
Sheep Lameness	168
Sheep Parasite Control Part 2: Sheep Scab, Lice and Liverfluke	96
Rearing Healthy Calves and Maximising Profit	72

Masterclasses



18

Masterclasses

Including:

- Improving grassland, legume & herb swards
- Master Regen
- Genetics for regenerative grazing

