

Venture is designed to help match farmers and landowners who are looking to step back from the industry with new entrants looking for a way into farming. It guides people on both sides through the key steps required to find a potential business partner. An integrated package of training, mentoring, specialist advice and business support equips participants with the skills, knowledge and confidence needed to help them achieve their goals.



Since its launch **165 individuals** have expressed an interest in the Venture initiative.

There are currently **143 active participants**.

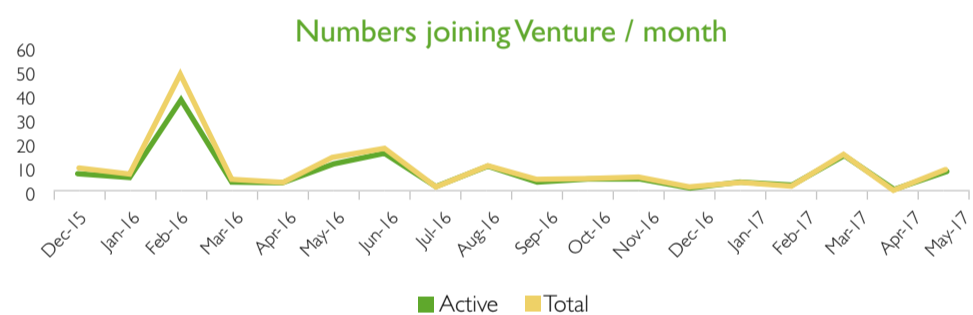
**88 are new entrants** seeking an opportunity while **55 are established farmers** or landowners providing an opportunity.

**4,000 acres** are currently being offered to Seekers.

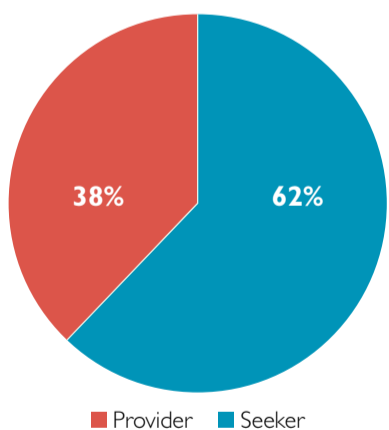


### RAG Score

■ Red ■ Amber ■ Green

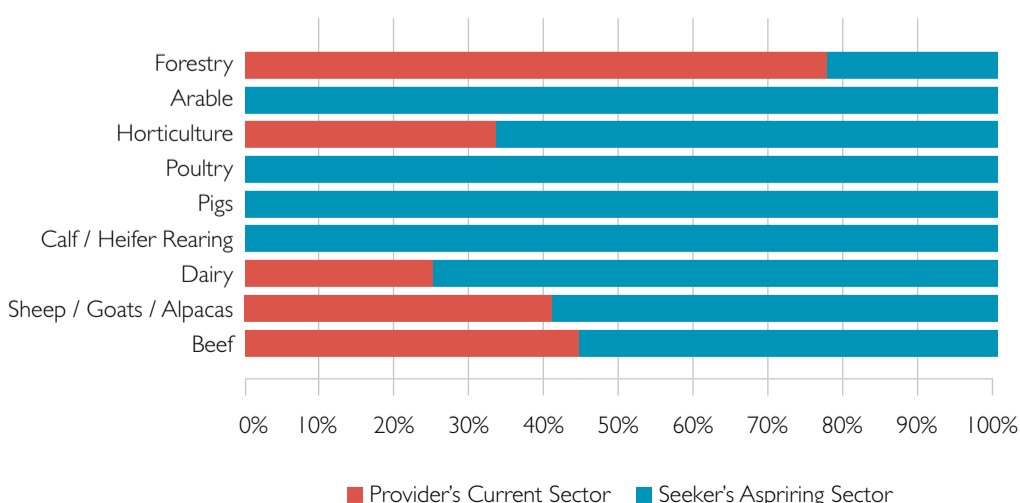


### Ratio of Seekers and Providers

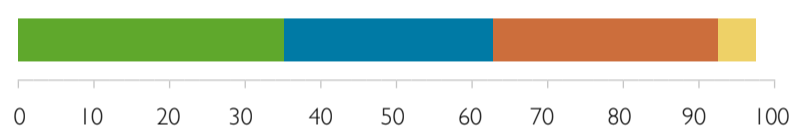


**27 matches have been made**

**32% of participants have identified a business partner**

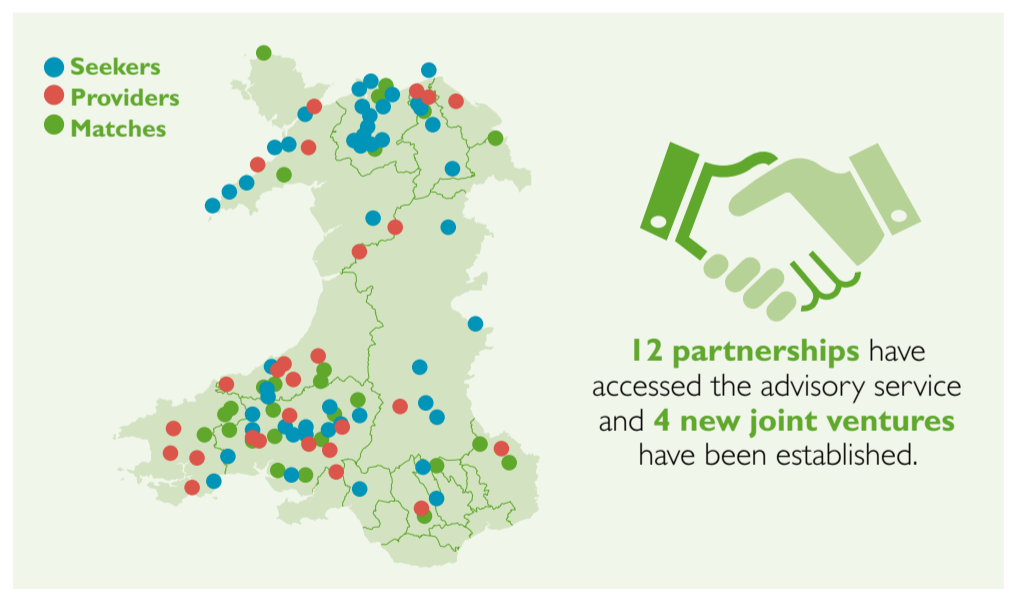


### Status



■ Information Gathering ■ Profile Submitted ■ Match Identified ■ Joint Venture Established

Their next step will be to apply for the Farming Connect Advisory Service which provides up to €3000 of fully funded advice to agree on a business structure and form a plan for their new group enterprise.



### Case Study



Arwel and Mary Davies and their son, Hywel, who milk 400 Holstein Friesians on three holdings, approached the Venture team to help them publicise a joint venture opportunity they were offering. Following several enquiries from interested parties the family have taken one of the Seekers on for a 6 month trial period. If, at the end of the trial period they find that the match is effective, they can access the Advisory Service for further support to establish a formal joint venture agreement.

Read more [here](#).